

# stretchable equipment

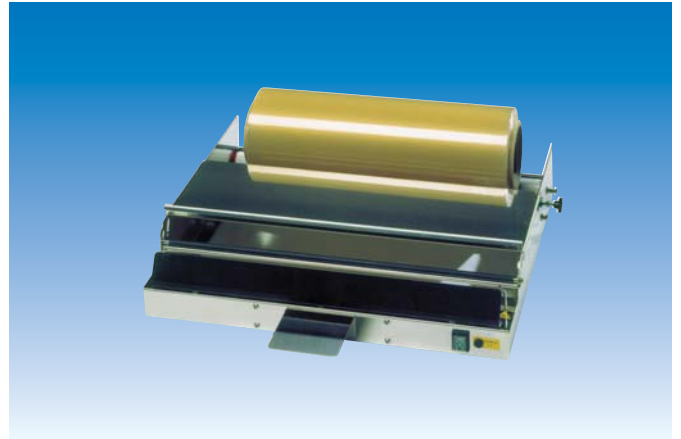
## Stretchable film unwinder



- Film cut by sliding knife.  
Coil : width 60 x Ø 20 cm.  
Manual break on the bobin.  
18/10 stainless corrugated iron.  
Dim. 65 x 54 x 15 cm.

**Code**  
**9354**

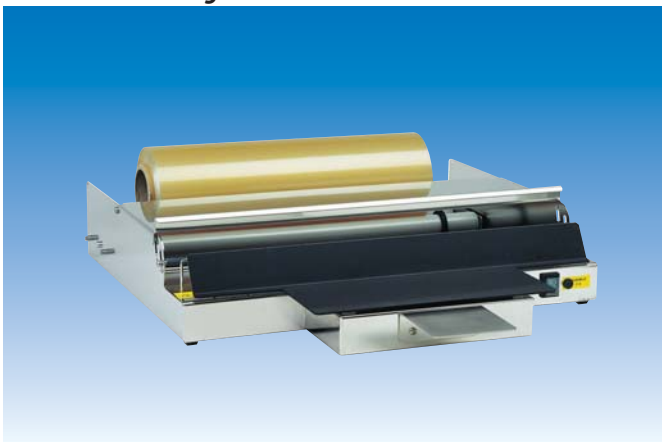
## Stretchable film unwinder



- Film cut by teflon heated plate.  
Coil : width 60 x Ø 20 cm.  
Manual break on the bobin.  
18/10 polished stainless corrugated iron,  
teflon mechanics.  
Power supply : 220/ 230 V- Power : 220 W.  
Dim. 65 x 54 x 15 cm.

**Code**  
**9342**

## Stretchable film unwinder and sealer



- Film cut and sealed by teflon heated plate.  
Coil : width 60 x Ø 20 cm.  
Manual break on the bobin.  
18/10 polished stainless corrugated iron.  
Power supply : 220/230 V – Power : 350 W.  
Dim. 65 x 60 x 15 cm

**Code**  
**9340**

## Stretchable film unwinder and sealer



- Film cut and sealed by teflon heated plate.  
Coil : width 60 x Ø 20 cm.  
Support for 2 coils and manual breaking.  
18/10 polished stainless corrugated iron  
teflon mechanics.  
Power supply : 220/230 V – power 350 W.  
Dim. 65 x 54 x 99 cm  
Available with lateral tablet (54 x 40 cm)  
and (PLU) label book support.

**Code**  
**9349**

Full set

**9349**

## Thermo-welder



"EASY" handle :  
easy closure

- Large weld guaranteeing a perfect water-proofness under paper film or aluminium.  
Luminous switch.  
18/10 polished stainless corrugated iron.  
Power supply : 220/230 V - Power : 230 W.  
Dim. 35 x 38 cm.

|                            |                            |
|----------------------------|----------------------------|
| Model with « easy » handle | <b>Code</b><br><b>9357</b> |
| Model with standard handle | <b>Code</b><br><b>9347</b> |

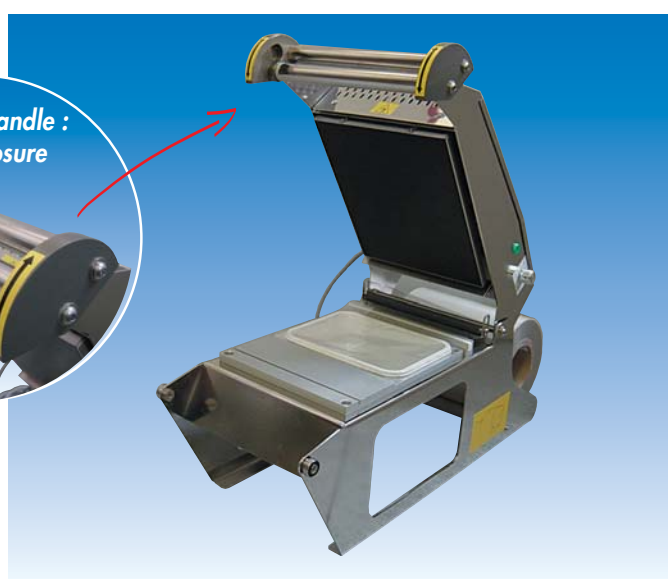


Model with standard handle

Optional extra :  
Stainless table  
(47 x 47 x 87 cm)  
with paper winder  
integrated.

**Code**  
**9367**

## Small container sealer



- Cutting and welding simultaneously of the film.  
Adjustable matrix for small and big format.  
Coil : width 18x Ø 20 cm.  
Electronic temperature regulation.  
18/10 polished stainless corrugated iron.  
Power supply : 220/230 V  
Power : 400 W.  
Dim. 55 x 19 x 44 cm

|                            |                            |
|----------------------------|----------------------------|
| Model with « easy » handle | <b>Code</b><br><b>9361</b> |
| Model with standard handle | <b>Code</b><br><b>9351</b> |

## Support for thermo welding machine



- For stand.  
Attachable and positioned at the back of the stand.  
Adjustable to obtain a horizontal support whatever the inclination of the stand.  
Dimensions : 47 x 42 cm.

|  |                            |
|--|----------------------------|
| Support without unroller               | <b>Code</b><br><b>7790</b> |
| Support with unroller and paper cutter | <b>Code</b><br><b>7791</b> |

## Desks



### Mural model

- Writing desk, stainless steel closable on desk. Mural mounting. Dimensions: 50 x 50 x 24 cm.

### Model on feet

- Dimensions: 50 x 50 x 105 cm. Set. Rolling: 4 swivelling wheels, 2 have breaks.

### Model with cupboard

- Dimensions: 50 x 50 x 105 cm. Drawer and cupboard closed by keys. 4 swivelling wheels, 2 have breaks

|               | Code        |
|---------------|-------------|
| Mural         | <b>8895</b> |
| Set           | <b>8896</b> |
| Rolling       | <b>8897</b> |
| With cupboard | <b>8894</b> |

## Cheese cutting table



- White polyethylene board, Ø 90 cm, turning. Equipped with a 1 hand knife, blade 45 cm.

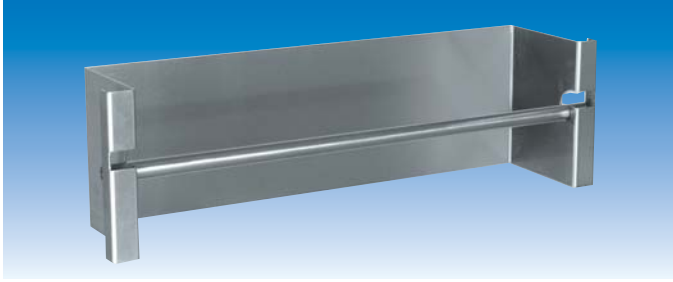
Optional extra : cheese cutters  
Ø 17 cm, height 29 cm,  
2 handles.

|  | Code        |
|--|-------------|
| Dropping tables                                | <b>8890</b> |
| Table on base<br>adjustable height (60-75 cm.) | <b>8891</b> |

|                |             |
|----------------|-------------|
| Cheese cutters | <b>8899</b> |
|----------------|-------------|



## Label winder



- Allows the storage and distribution of labels on rolls.  
Dimensions : 70 x 16 x 20 cm.  
Same model for mural and table mountings.

**Code**  
**8864**

## Magnetic bars



- Tool holding magnetic bar.  
For knives and miscellaneous magnetic utensils.  
Mural mounting.

**Code**  
**8875**  
Length. 50 cm

## Compressed air coil



- Automatic recoil of the tube (15 m).  
Mural mounting or ceiling fixation.  
Red polypropylene protective case.  
Red tube, Øint. 10 mm, for 17 bars.  
Ø admission 3/8.  
Blowing pistol as optional extra.

|        |                            |
|--------|----------------------------|
| Coil   | <b>Code</b><br><b>5562</b> |
| Pistol | <b>Code</b><br><b>5563</b> |

## Pharmaceutical wardrobe



- White corrugated iron.  
Mural binding.  
2 doors  
Dimensions : 54 x 20 x 56 cm

**Code**  
**8893**

**Don't hesitate  
to ask for our catalogue  
« Service and preparation tools »**

